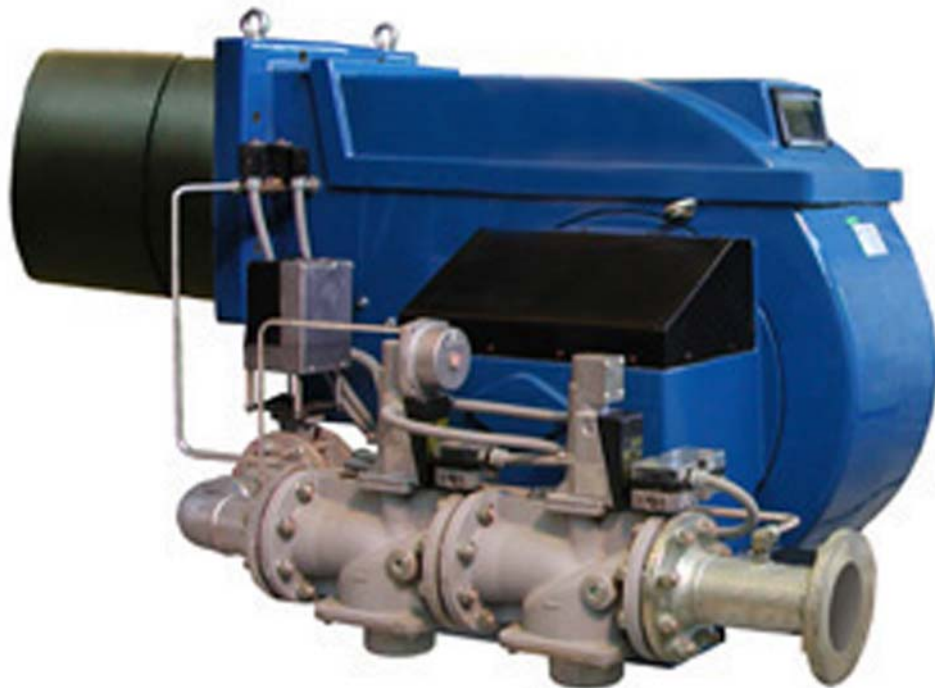


SGB-600/700/900-F/PB-...

**AUTOMATICALLY CONTROLLED COMPACT GAS
BURNERS
1400-9000 kW**

**Flexible turndown range
High combustion efficiency
Reliable construction
Easy and simple to maintenance
Environmentally friendly**

SGB-600/700/900-F/PB-...gas burners



GB-GANZ

**Tüzeléstechnikai Kft.
HUNGARY**

H-1103 Budapest, Szilágyi u. 22-30. Tel.: +36-1-260-2727 F: +36-1-260-0033

Internet: www.gb-ganz.hu E-mail: gbganz@gb-ganz.hu

General information:

Having developed the SGB gas burner series we should like to provide modern firing devices for an economic, and efficient gas combustion. The compact, fully automatically controlled burners are suitable for combustion of natural gas and LPG. The simple construction makes quick fitting possible, the use of excellent-quality safety-, and control devices results in low maintenance cost. Mode of output control: Modulating by the actual thermal request. The wide range gas/air ratio is controlled by electronic control unit. Stand-by loss is minimal. During operation the primary burner control unit is continuously detecting the flame, the gas-, and air pressure. Gas train is equipped with leakage control unit. In manufacturing we highly take the users' requirements into consideration, so that, beside the mass-produced burners there is a possibility of delivering also special versions. Standard or extended air-tube equipped burners are well adaptable to any furnace chamber. Ordering burner, kind of gas and its pressure have to be taken into consideration. Commissioning relevant legislations and standards have to be observed. The burners can be mounted on heating appliances of industrial, agricultural or communal plants as follows:

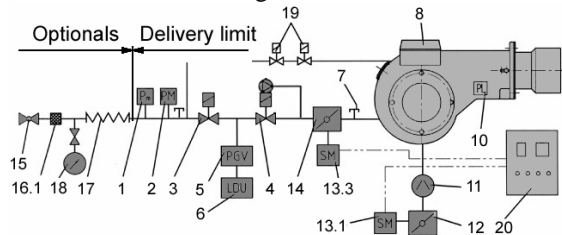
- steam-, warm-, and hot-water boilers
- hot air blowers
- agricultural and industrial dryers
- other equipments of technology

Advantages:

- high combustion efficiency
- flexible turndown range
- stable flame
- simple assemblage, quick maintenance
- wide range of optional accessories
- environment-safe, low-pollutant emission
- reliable construction
- long-life operation

Gas train configuration:

Modulating output control with electronically controlled gas/air ratio:



1. Minimum gas pressure switch
2. Maximum gas pressure switch
3. Safety gas valve
4. Main gas valve with gas pressure governor
5. Gas pressure switch for leakage control unit
6. Gas leakage control unit
7. Gauge pins
8. Switch-box with ignition transformer incorp.
10. Air pressure switch
11. Air blower
12. Air damper
- 13.1 Air damper motor
- 13.3 Gas butterfly damper motor
14. Gas butterfly damper
19. Ignition pipe-line solenoid valves
20. Command board

Optionals for special request:

15. Manual globe-cock
- 16.1 Filter
- 16.2 Gas pressure governor with filter incorporated
17. Antivibrating connection
18. Pressure gauge

GB-GANZ

Tüzeléstechnikai Kft.
HUNGARY

H-1103 Budapest, Szlávy u. 22-30. Tel.: +36-1-260-2727 F: +36-1-260-0033

Internet: www.gb-ganz.hu E-mail: gbganz@gb-ganz.hu

Main technical data:

Type	SGB-600	SGB-700	SGB-900
Output range	1500-6000 kW	1400-7000 kW	1800-9000 kW
Fuel	Natural gas or LPG		
Mode of output control	Modulating PID system		
Turndown ratio	1:5		
Primary burner control unit	Landis LFL 1.322, LFL 1.622, LGK-16 or LMV 51		
Electronical gas/air ratio control unit	Landis RVW 20, RVW 25 or LMV 51		
Gas leakage control unit	Landis LDU 11 or LMV 51		
Ignition	Automatically, by high voltage spark and pilot burner		
Flame detector	UV system		
Electrical connection	3x400/230 V, 50 Hz+N+PE		
Electrical power consumption	11 kW	16,5 kW	23,5 kW
Electrical protection	IP 54		
Burners with alternative – non standard – parameters can be manufactured by special request, after consulting			

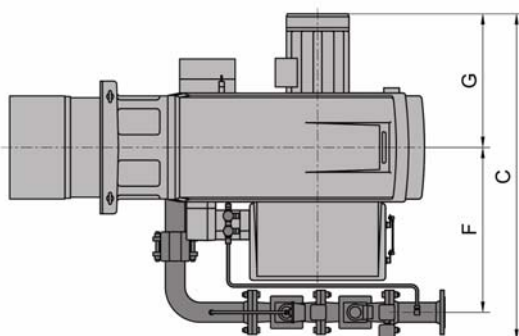
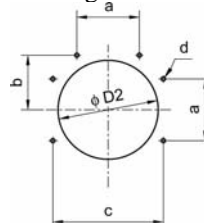
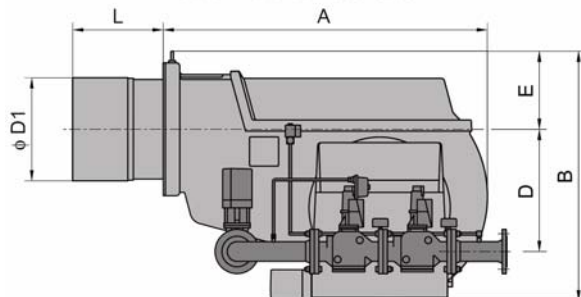
Gas train sizes:

Gas pressure range symbols	101-150 mbar	151-200 mbar	201-350 mbar	351-500 mbar
	3	4	5	6
Natural gas firing burner gas train diameters for different connecting pressures				
SGB-600	-	DN 80	DN 80	DN 2" BSP
SGB-700	-	DN 100	DN 80	DN 80
SGB-900	-	DN 100	DN 100	DN 80
LPG firing burner gas train diameters for different connecting pressures				
SGB-600	DN 80	DN 80	DN 2" BSP	DN 2" BSP
SGB-700	-	DN 80	DN 80	DN 2" BSP
SGB-900	-	DN 80	DN 80	DN 2" BSP

Outline drawing and connecting dimensions:

SGB-600/700/900

Flange mounting holes on the boiler



	SGB-600	SGB-700	SGB-900
A	1220	1460	1460
B	975	1125	1125
C	1400	1465	1525
D ₁	φ 380	φ 466	φ 466
D ₂	φ 410	φ 480	φ 480
E	308	353	353
F	620	745	745
G	600	605	665
L	410	420	420
a	220	300	300
b	220	265	265
c	440	530	530
d	M 18	M 16	M 16

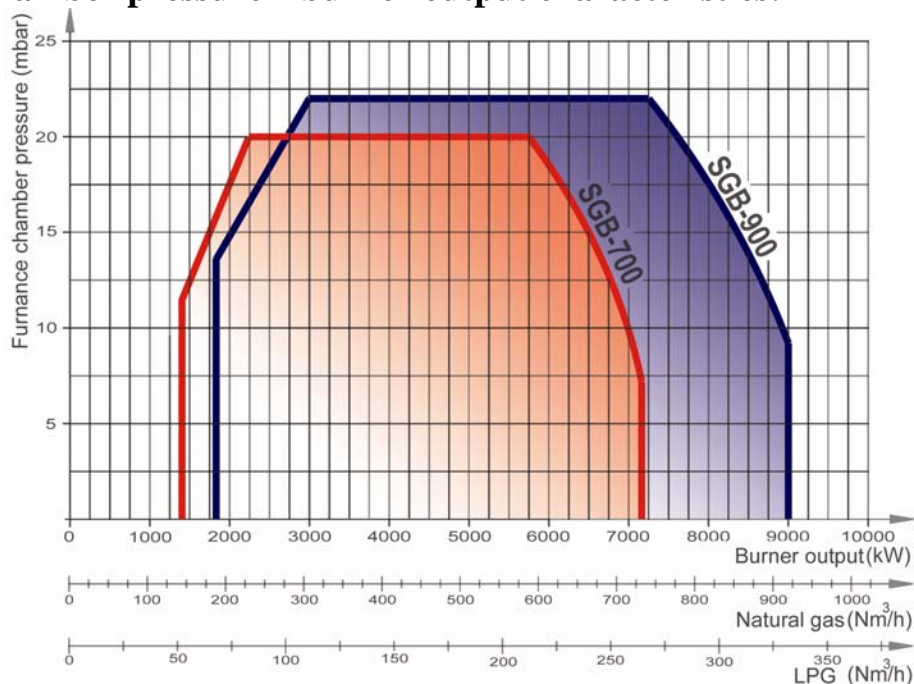
GB-GANZ

Tüzeléstechnikai Kft.
HUNGARY

H-1103 Budapest, Szilávy u. 22-30. Tel.: +36-1-260-2727 F: +36-1-260-0033

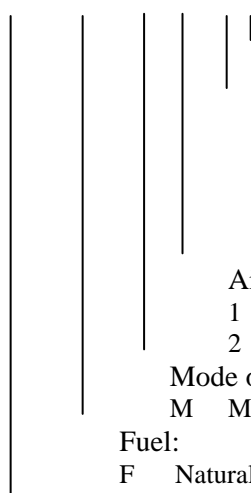
Internet: www.gb-ganz.hu E-mail: gb-ganz@gb-ganz.hu

Furnace chamber pressure – burner output characteristics:



Gas burner type symbols:

SGB-□□□-G/□-□-□-□-□



Gas train equipped with:

- T Leakage control unit
- S Vent to the air valve¹⁾

Inlet gas pressure figure:

- 3 101-150 mbar²⁾
- 4 151-200 mbar²⁾
- 5 201-350 mbar
- 6 351-500 mbar

Air-tube length figure:

- 1 Standard air-tube L=420 mm
- 2 Extended air-tube L_{max}=1000 mm³⁾

Mode of output control:

- M Modulating

Fuel:

- F Natural gas
- PB LPG

Type indication:

- SGB-600 1500-6000 kW
- SGB-700 1400-7000 kW
- SGB-900 1800-9000 kW

¹⁾ non standard version, only for special request

²⁾ only in case of LPG firing

³⁾ ordering, air-tube length has to be consulted



Regional Sales Office:

Transdanubian Sales Office: H-8300 Tapolca Juhász Gy. u. 2/1., Hungary Tel/F.:+36-87-510-670

Your regional dealer:



GB-GANZ

Tüzeléstechnikai Kft.
HUNGARY

H-1103 Budapest, Szilávy u. 22-30. Tel.: +36-1-260-2727 F: +36-1-260-0033

Internet: www.gb-ganz.hu E-mail: gbganz@gb-ganz.hu