

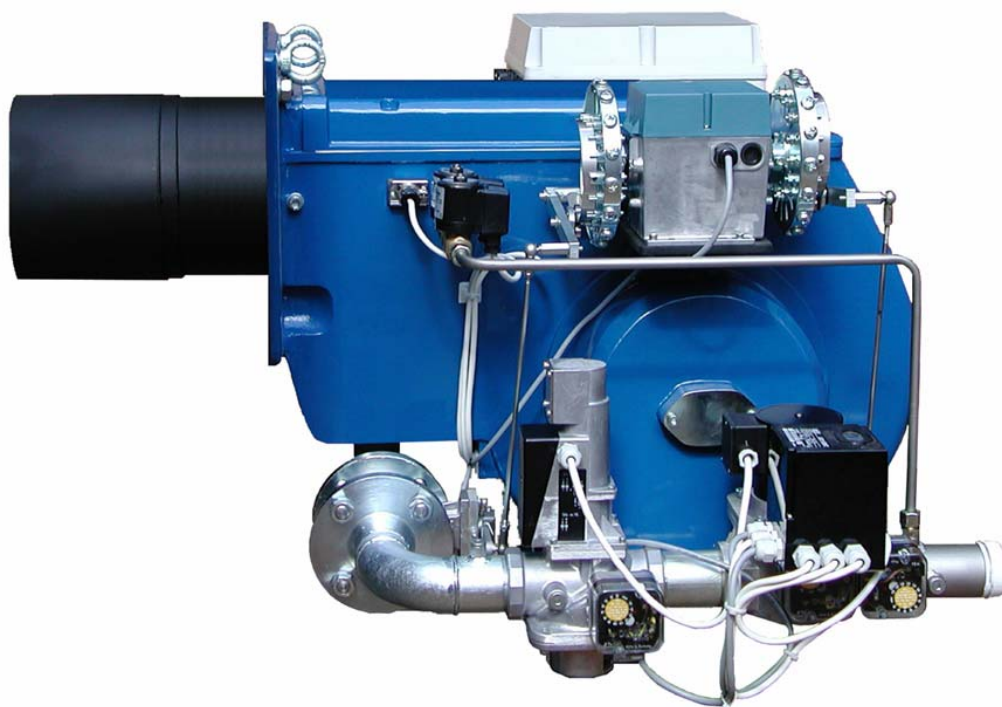
SGB-275/300-F/PB-...

**AUTOMATICALLY CONTROLLED COMPACT GAS
BURNERS**

800-2750/900-3100 kW

**Flexible turndown range
High combustion efficiency
Reliable construction
Easy and simple to maintenance
Environmentally friendly**

SGB-275/300-F/PB-... gas burners



GB-GANZ

**Tüzeléstechnikai Kft.
HUNGARY**

H-1103 Budapest, Szilávy u. 22-30. Tel.: +36-1-260-2727 F: +36-1-260-0033

Internet: www.gb-ganz.hu E-mail: gbganz@gb-ganz.hu

General information:

Having developed the SGB type gas burner series we should like to provide modern firing devices for an economic and efficient gas combustion. The compact, fully automatically controlled burners are suitable for combustion of natural gas and LPG. The simple construction makes quick fitting and set-up possible, the use of the excellent-quality safety-, and control devices results in low maintenance cost. Depending on the user's requirements, burner can have the following output control systems: HIGH/LOW with slow load change and Modulating, by the actual thermal request. Gas/air ratio control can be adjusted by pneumatic or mechanical way, by the user's request. During operation the primary burner control unit is continuously detecting the flame, the gas and air pressure. Gas train is equipped with leakage control unit. In manufacturing we highly take the users' requirements into consideration, so that, beside the mass-produced burners there is a possibility of delivering also special versions. Standard or extended air-tube equipped burners are well adaptable to any boiler furnace chamber. Ordering burner, kind of gas and its pressure have to be taken into consideration. Commissioning relevant legislations and standards have to be observed. The burners can be mounted on heating appliances of industrial, agricultural or communal plants as follows:

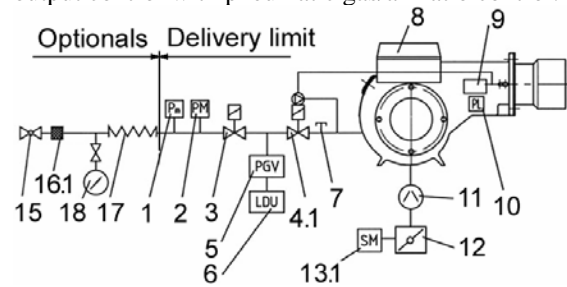
- boilers
- hot-air blowers
- agricultural and industrial dryers
- other equipments of technology

Advantages:

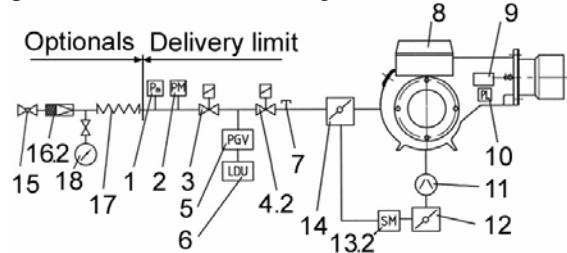
- high combustion efficiency
- flexible turndown range
- stable flame
- simple assemblage, quick maintenance
- wide range of optional accessories
- environment-safe, low-pollutant emission
- reliable construction
- long-life operation

Gas train configurations:

HIGH/LOW slow load change and Modulating output control with pneumatic gas/air ratio control:



HIGH/LOW slow load change and Modulating output control with mechanical gas/air ratio control:



1. Minimum gas pressure switch
2. Maximum gas pressure switch
3. Safety gas valve
- 4.1 Main gas valve with gas/air ratio control
- 4.2 Main gas valve
5. Gas pressure switch for gas leakage control
6. Gas leakage control unit
7. Gauge pin
8. Control box with primary control unit
9. Ignition transformer
10. Air pressure switch
11. Air blower
12. Air damper
- 13.1 Air damper motor
- 13.2 Gas and air damper two-shafted motor
14. Gas butterfly damper

Optionals for special request:

15. Manual globe-cock
- 16.1 Filter
- 16.2 Gas pressure governor with filter incorp.
17. Antivibrating connection
18. Pressure gauge
Burner output control unit

GB-GANZ

Tüzeléstechnikai Kft.
HUNGARY

H-1103 Budapest, Szilávy u. 22-30. Tel.: +36-1-260-2727 F: +36-1-260-0033

Internet: www.gb-ganz.hu E-mail: gb ganz@gb-ganz.hu

Main technical data:

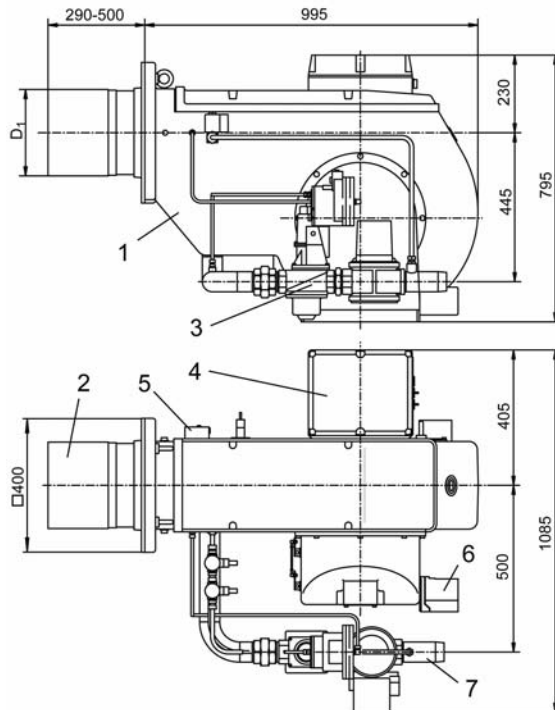
Type	SGB-275	SGB-300
Output range	800-2750 kW	900-3100 kW
Fuel	Natural gas or LPG	
Turndown ratio	1:3	
Primary burner control unit	Landis LFL 1.322 or LFL 1.622	
Gas leakage control unit	Landis LDU 11	
Ignition	Automatically, by high voltage spark	
Flame detector	UV or ionization system	
Electrical connection	3x400/230 V, 50 Hz+N+PE	
El power consumption	6,3 kW	9 kW
Electrical protection	IP 44	
Burners with alternative – non standard – parameters can be manufactured by special request, after consulting		

Gas train sizes:

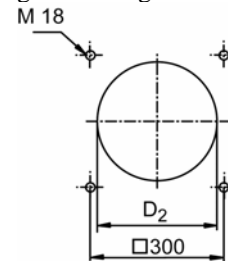
Gas pressure range symbols	41-100 mbar 2	101-150 mbar 3	151-200 mbar 4	201-350 mbar 5	351-500 mbar 6
Natural gas firing burner gas train diameters for different connecting pressures:					
SGB-275	DN 80 ¹⁾	DN 80	DN 2" BSP	DN 1 ½" BSP	DN 1 ½" BSP
SGB-300	-	DN 80	DN 2" BSP	DN 1 ½" BSP	DN 1 ½" BSP
LPG firing burner gas train diameters for different connecting pressures:					
SGB-275	DN 80	DN 2" BSP	DN 1 ½" BSP	DN 1 ½" BSP	
SGB-300	DN 80	DN 2" BSP	DN 1 ½" BSP	DN 1 ½" BSP	

¹⁾ Only for special request

Outline drawing and connecting dimensions:



Flange mounting holes on the boiler



	D ₁	D ₂
SGB-275	260	290
SGB-300	280	300

1. Burner house
2. Air-tube
3. Gas train
4. Control box
5. Air pressure switch
6. Air damper motor
7. Gas inlet

GB-GANZ

Tüzeléstechnikai Kft.
HUNGARY

H-1103 Budapest, Szilávy u. 22-30. Tel.: +36-1-260-2727 F: +36-1-260-0033

Internet: www.gb-ganz.hu E-mail: gb-ganz@gb-ganz.hu

