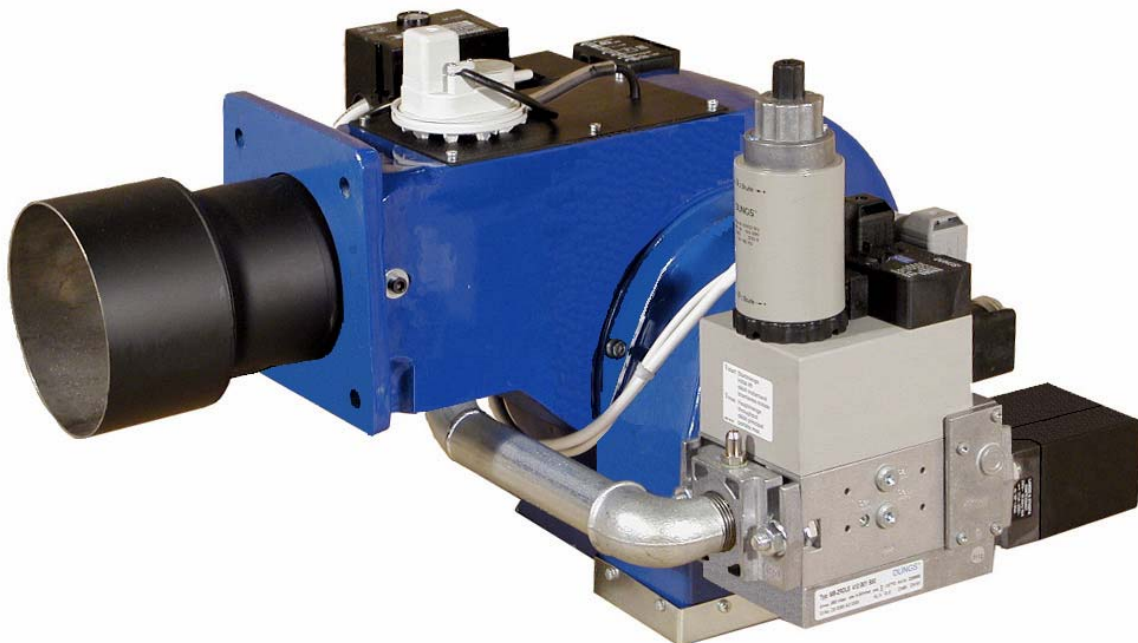


# ABG-30-F/PB-...

## AUTOMATICALLY CONTROLLED COMPACT GAS BURNER 80-290 kW

**Flexible output control system**  
**High combustion efficiency**  
**Reliable construction**  
**Easy and simple to maintenance**  
**Environmentally friendly**



ABG-30-F/PB-... gas burner



**GB-GANZ**

**Tüzeléstechnikai Kft.**  
Hungary

H-1103 Budapest, Szlávy u. 22-30. Tel.: (+36-1) 260-2727 F: (+36-1) 260-0033  
Internet: [www.gb-ganz.hu](http://www.gb-ganz.hu) E-mail: [gbganz@gb-ganz.hu](mailto:gbganz@gb-ganz.hu)

## General information:

Developing the ABG gas burner range we should like to provide a modern firing device for an economical and efficient gas combustion. The compact, fully automatically controlled burners are suitable for combustion of natural gas and LPG.

The simple construction makes quick fitting and set-up possible, the use of excellent quality safety-, and control devices result in low maintenance cost. Depending on the user's requirements, burners can have the following output control systems: ON/OFF, HIGH/LOW with fast or slow load change and Modulating by the actual thermal request. During operation the primary burner control unit is continuously detecting the flame, and the pressure of gas and air. In manufacturing we highly take the user's requirements into consideration, so beside the mass-produced burners, there is a possibility of delivery also special versions. Standard or extended air-tube equipped burners are well adaptable to any boiler furnace chamber. Ordering burner, the kind of gas and its pressure have to be taken into consideration. Commissioning relevant legislations and standards have to be observed.

The burners can be mounted on heating appliances of industrial, agricultural or communal plants as follows:

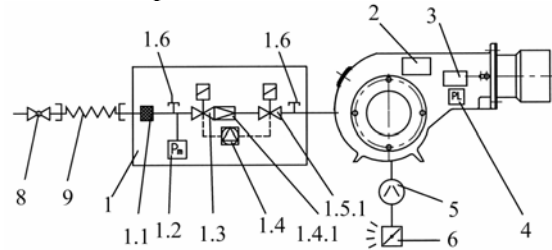
- boilers
- hot-air blowers
- agricultural and industrial dryers
- other equipments of technology.

### Advantages of the ABG type burners:

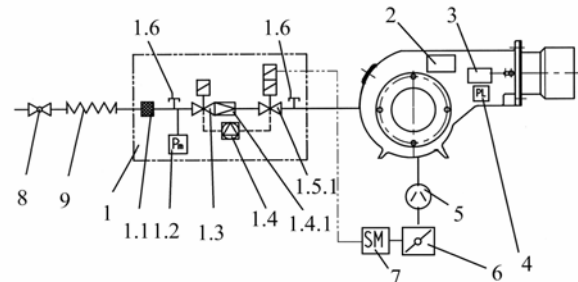
- high combustion efficiency
- flexible output control range
- stable flame
- simple and fast electric connection with special connectors
- simple assemblage, quick maintenance
- wide range of optional accessories
- environment safe low pollutant emission
- reliable construction
- long-life operation

## Gas train configuratons:

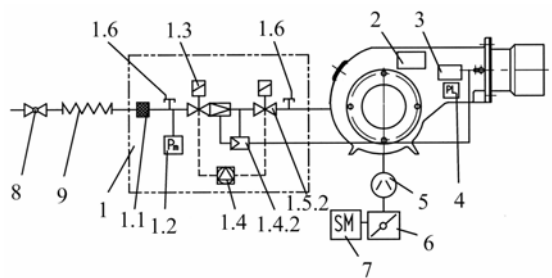
ON/OFF output control:



HIGH/LOW fast load change output control:



HIGH/LOW slow load change and Modulating output control:



1. Combination gas valve
- 1.1 Gas filter
- 1.2 Minimum gas pressure switch
- 1.3 Safety gas valve
- 1.4 Gas leakage control unit
- 1.4.1 Gas pressure governor
- 1.4.2 Pneumatic air/gas ratio control
- 1.5.1 Two-stage main gas valve
- 1.5.2 Main gas valve
- 1.6 Gauge pin
2. Primary burner control
3. Ignition transformer
4. Minimum air pressure switch
5. Air blower
6. Air damper
7. Air damper motor

### Optionals:

8. Manual shut-off valve
  9. Flexible hosing
- Burner output control unit  
Thermostat  
Pressure gauge

# GB-GANZ

Tüzeléstechnikai Kft.

Hungary

H-1103 Budapest, Szlávy u. 22-30. Tel.: (+36-1) 260-2727 F: (+36-1) 260-0033

Internet: [www.gb-ganz.hu](http://www.gb-ganz.hu) E-mail: [gbganz@gb-ganz.hu](mailto:gbganz@gb-ganz.hu)

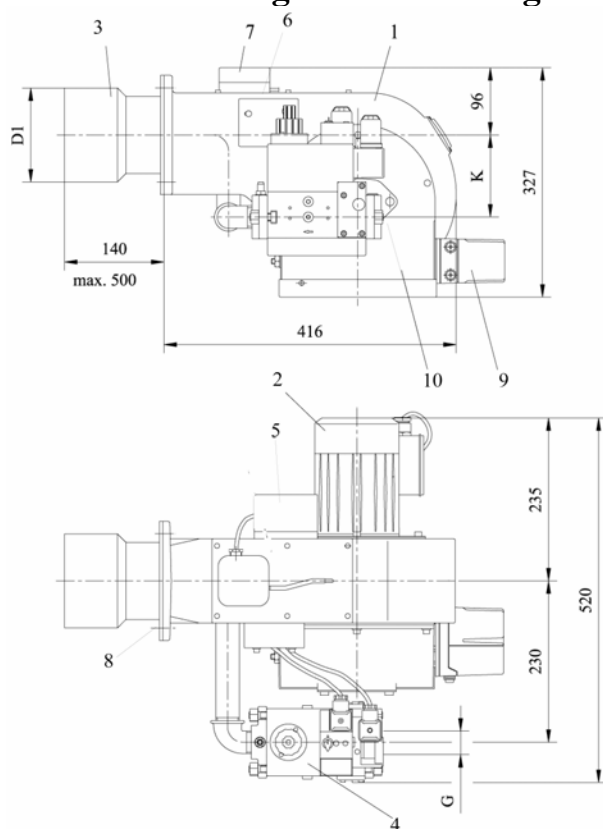
## Main technical data:

|   |   |                 |               |
|---|---|-----------------|---------------|
| Type  | <b>ABG-30-D</b>                                 | <b>ABG-30-E</b> | <b>ABG-30</b> |
| Output range  | 80-140 kW                                       | 80-175 kW       | 140-290 kW    |
| Starting output   | 60-120 kW                                       |                 |               |
| Fuel  | natural gas or LPG                              |                 |               |
| Turndown range  | 1:2   |                 |               |
| Flame detector  | ionization electrode, or UV for special request |                 |               |
| Primary burner control                                    | LGB 21/22 vagy LMG 21/22 (Landis)               |                 |               |
| Electrical connection                                     | 230 V, 50 Hz+PE, 300 W                          |                 |               |
| Electrical protection                                     | IP 20 <sup>1)</sup>                             |                 |               |
| Weight <sup>2)</sup>                                      | 26-28 kg  |                 |               |
| <sup>1)</sup> for special order IP 40                     |   |                 |               |
| <sup>2)</sup> depending on the gas train diameter nominal |   |                 |               |

## Gas train sizes:

| Natural gas or LPG firing burner gas train diameters for different connecting pressures. |                          |            |             |              |              |              |
|--|--------------------------|------------|-------------|--------------|--------------|--------------|
| Gas pressure range symbols   | 0                        | 1          | 2           | 3            | 4            | 5            |
|  | 20-30 mbar <sup>3)</sup> | 31-40 mbar | 41-100 mbar | 101-150 mbar | 151-200 mbar | 201-350 mbar |
| <b>ABG-30-D</b>  | DN 3/4"                  |            |             |              |              |              |
| <b>ABG-30-E</b>  | DN 3/4"                  |            |             |              |              |              |
| <b>ABG-30</b>  | DN 1"                    |            |             |              |              |              |
| <sup>3)</sup> at LPG firing minimal gas pressure is 30 mbar                              |                          |            |             |              |              |              |

## Outline drawing and connecting dimensions:



1. Burner house
2. Fan motor
3. Air-tube
4. Combination gas valve
5. Command box
6. Ignition transformer
7. Minimum air pressure switch
8. Fixing hole
9. Air damper
10. Gas inlet

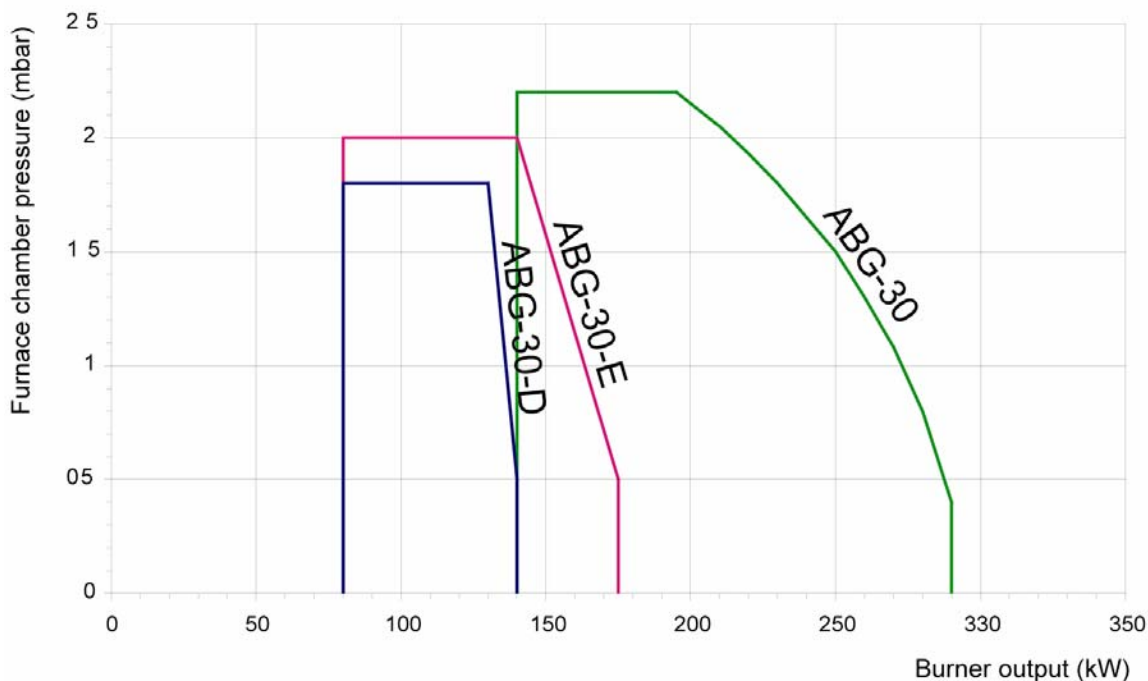
| Changing dimensions |     |          |     |
|---------------------|-----|----------|-----|
|                     | D1  | G        | K   |
| ABG-30-D            | 123 | 3/4" BSP | 108 |
| ABG-30-E            | 123 | 3/4" BSP | 108 |
| ABG-30              | 133 | 1" BSP   | 115 |

# GB-GANZ

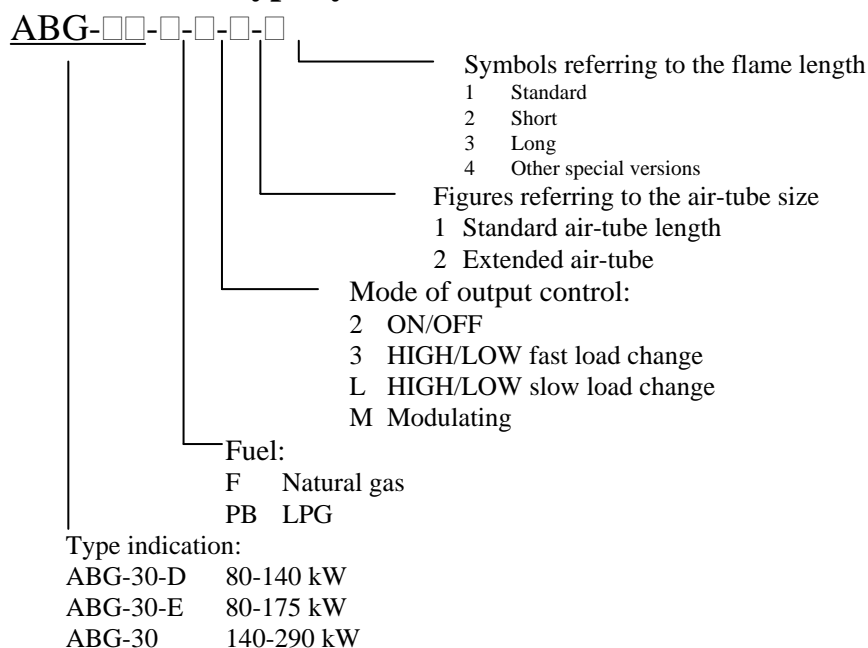
Tüzeléstechnikai Kft.  
Hungary

H-1103 Budapest, Szlávy u. 22-30. Tel.: (+36-1) 260-2727 F: (+36-1) 260-0033  
Internet: [www.gb-ganz.hu](http://www.gb-ganz.hu) E-mail: [gbganz@gb-ganz.hu](mailto:gbganz@gb-ganz.hu)

## Furnace chamber pressure – burner output characteristics:



### Gas burner type symbols:



### Regional Sales Offices:

Transdanubian Sales Office:

8300 Tapolca Juhász Gy. u. 2/1. Tel/F.:(36-87) 510-670

**Your regional dealer:**

# GB-GANZ

**Tüzeléstechnikai Kft.**  
Hungary

H-1103 Budapest, Szlávy u. 22-30. Tel.: (+36-1) 260-2727 F: (+36-1) 260-0033  
Internet: [www.gb-ganz.hu](http://www.gb-ganz.hu) E-mail: [gbganz@gb-ganz.hu](mailto:gbganz@gb-ganz.hu)